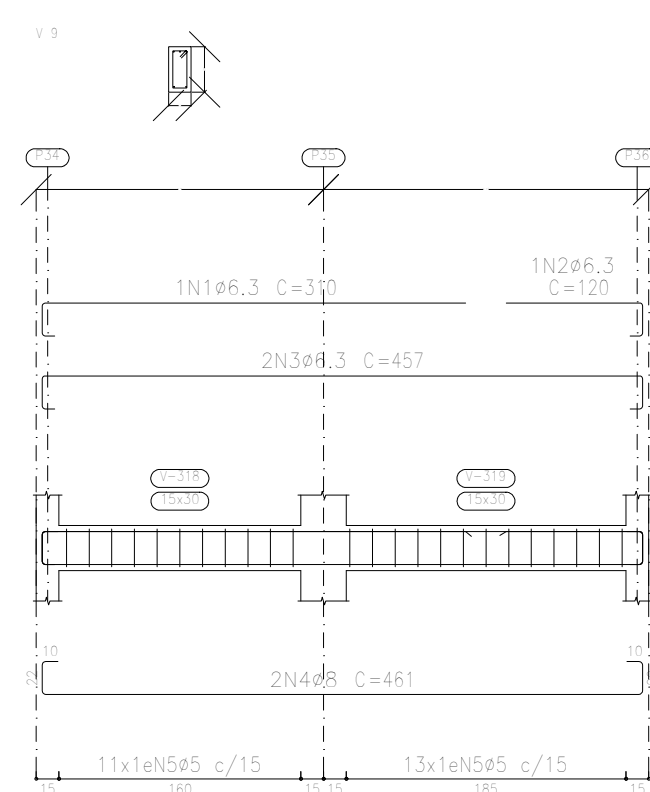
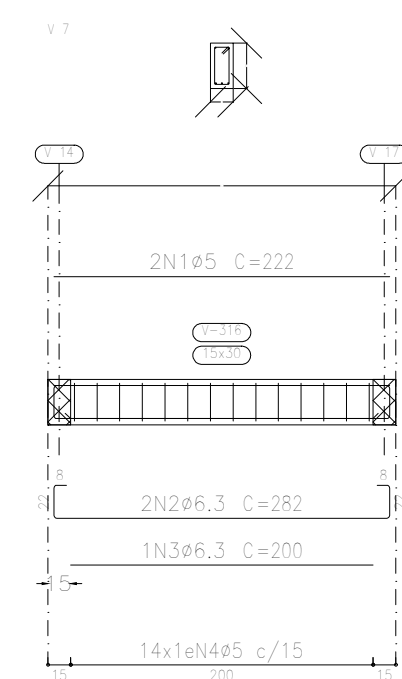
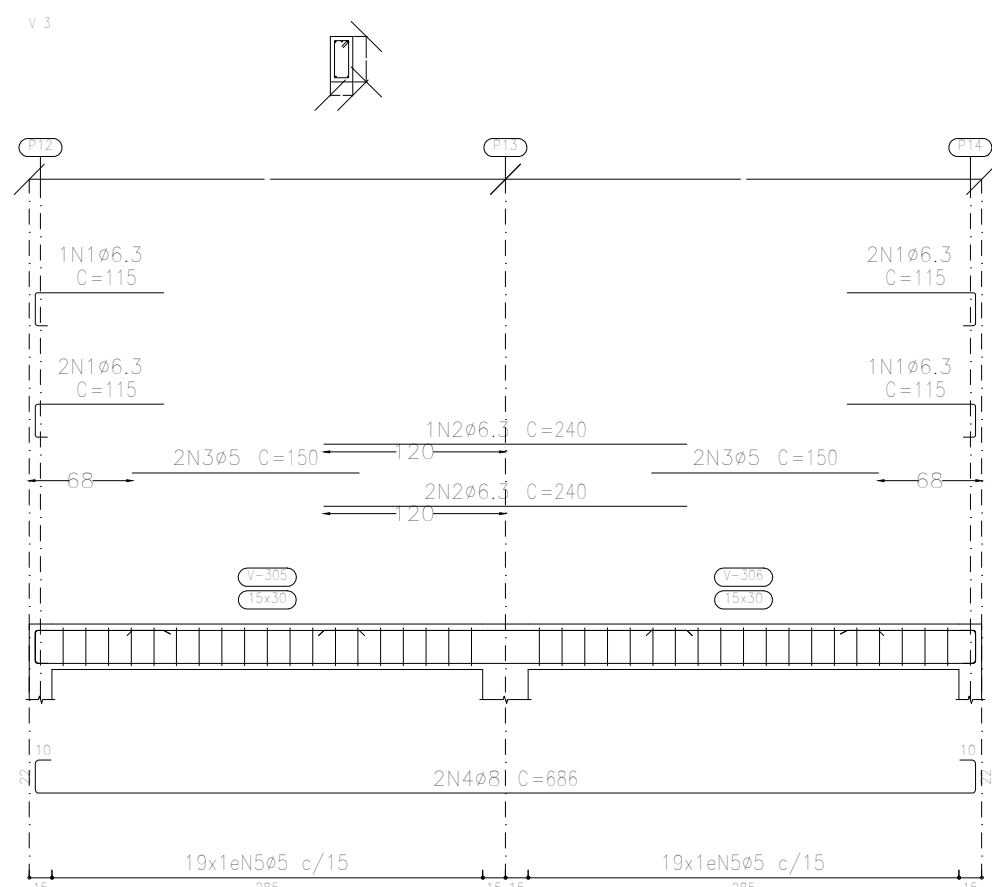
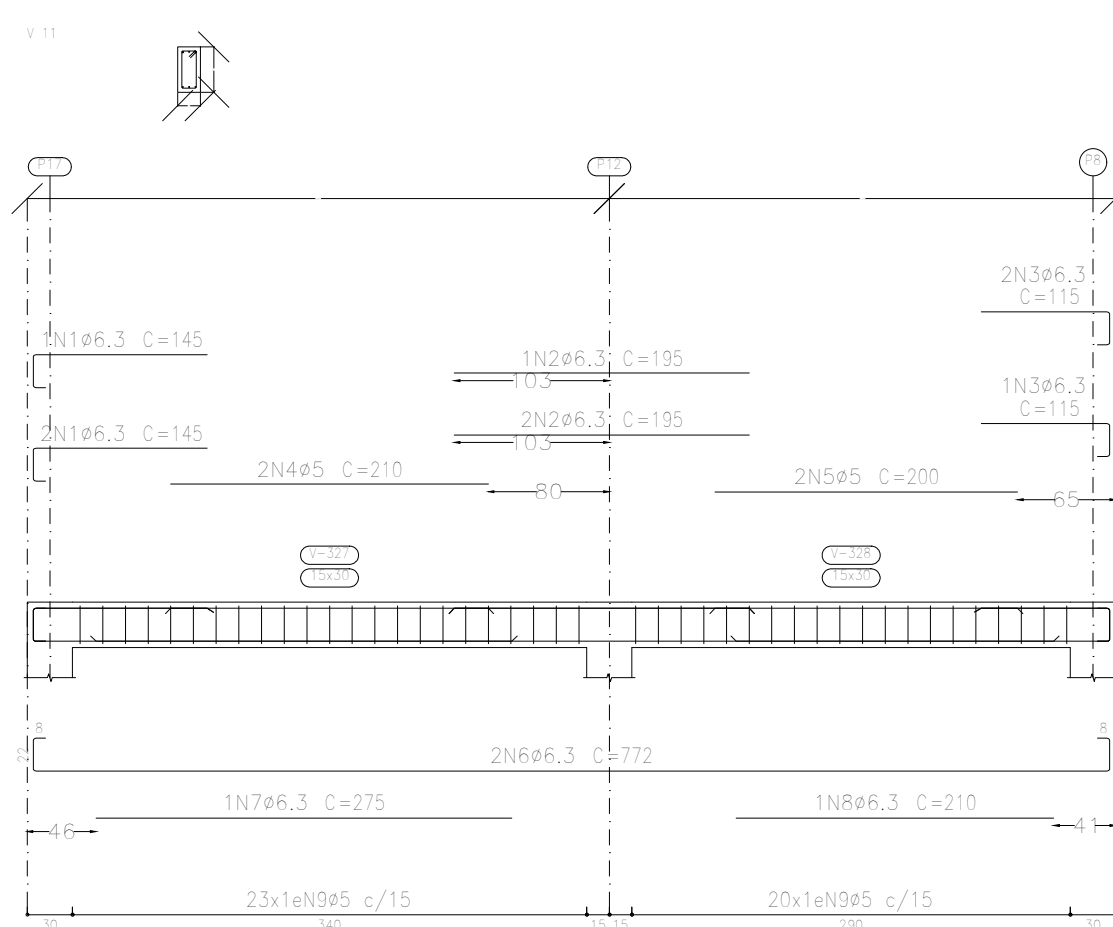
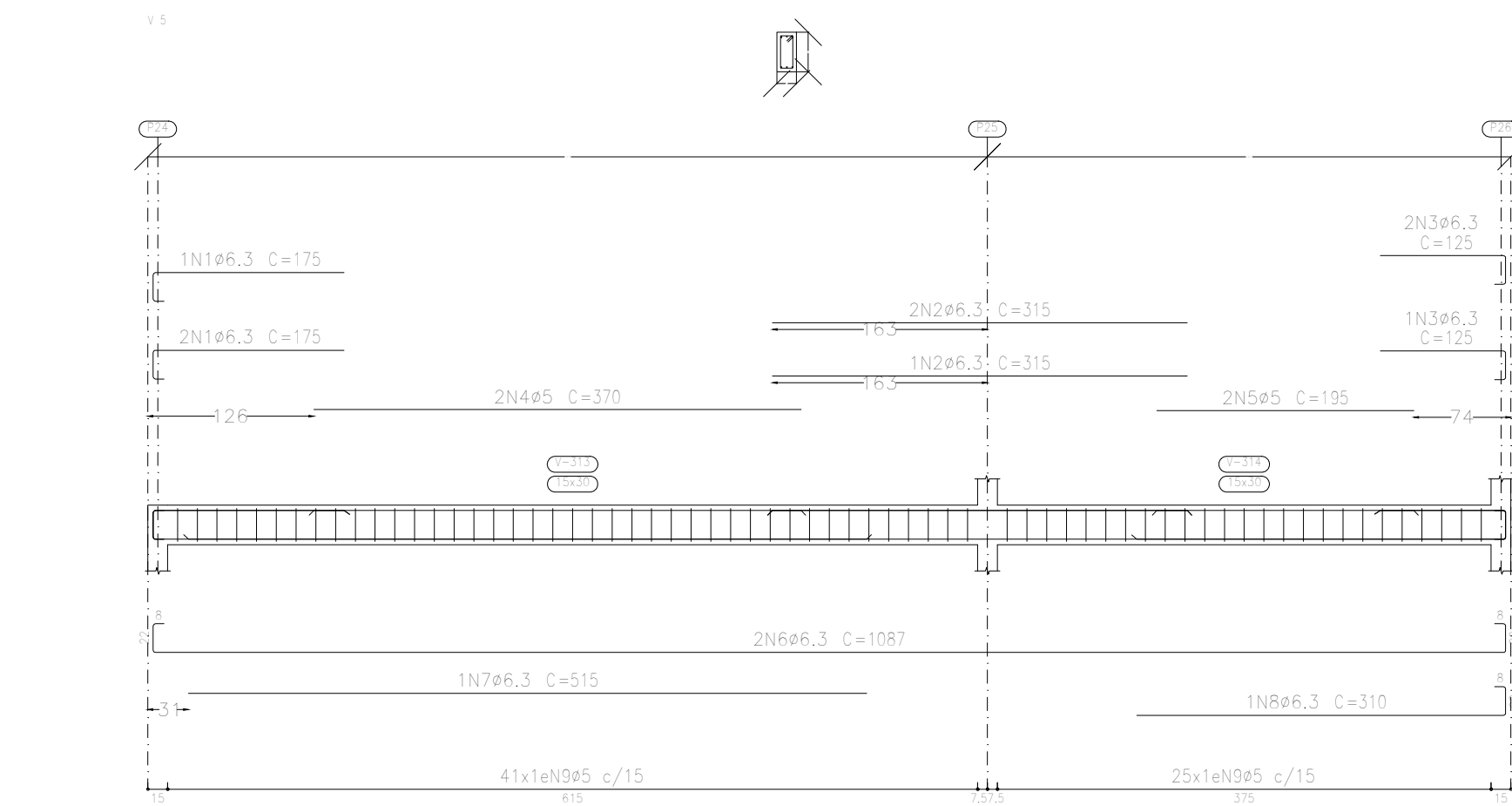
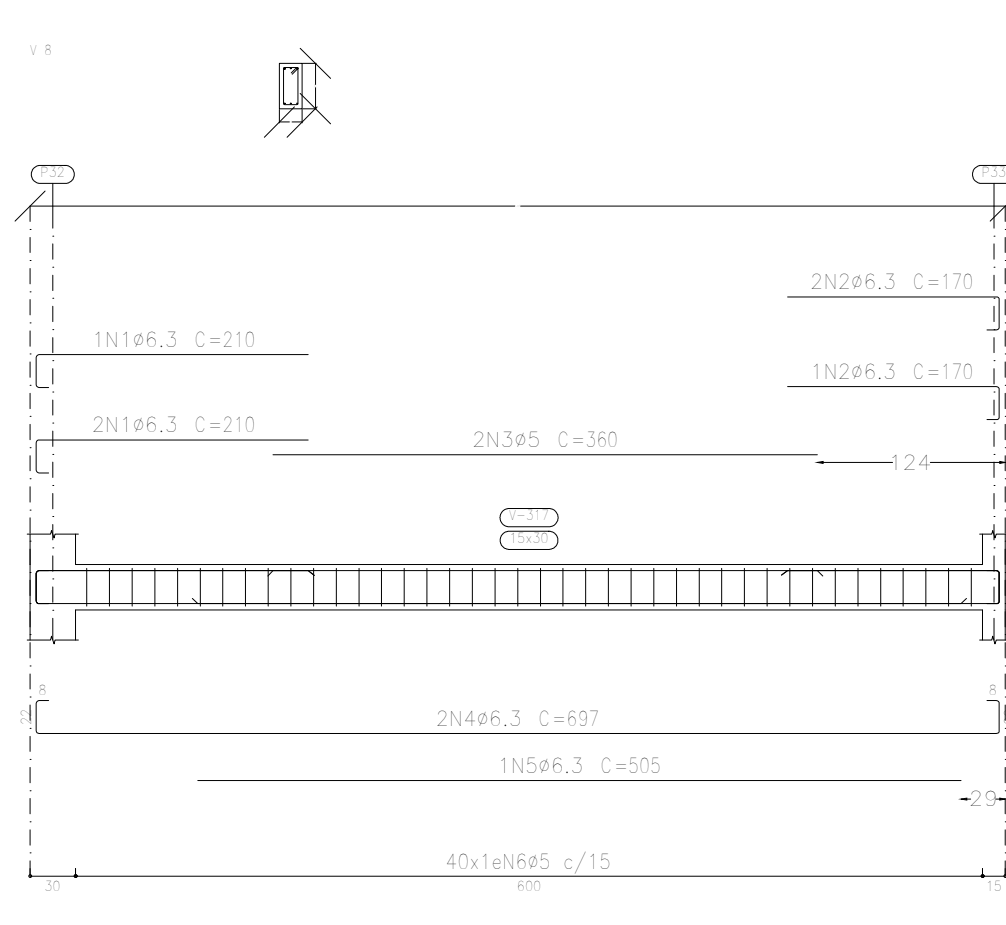
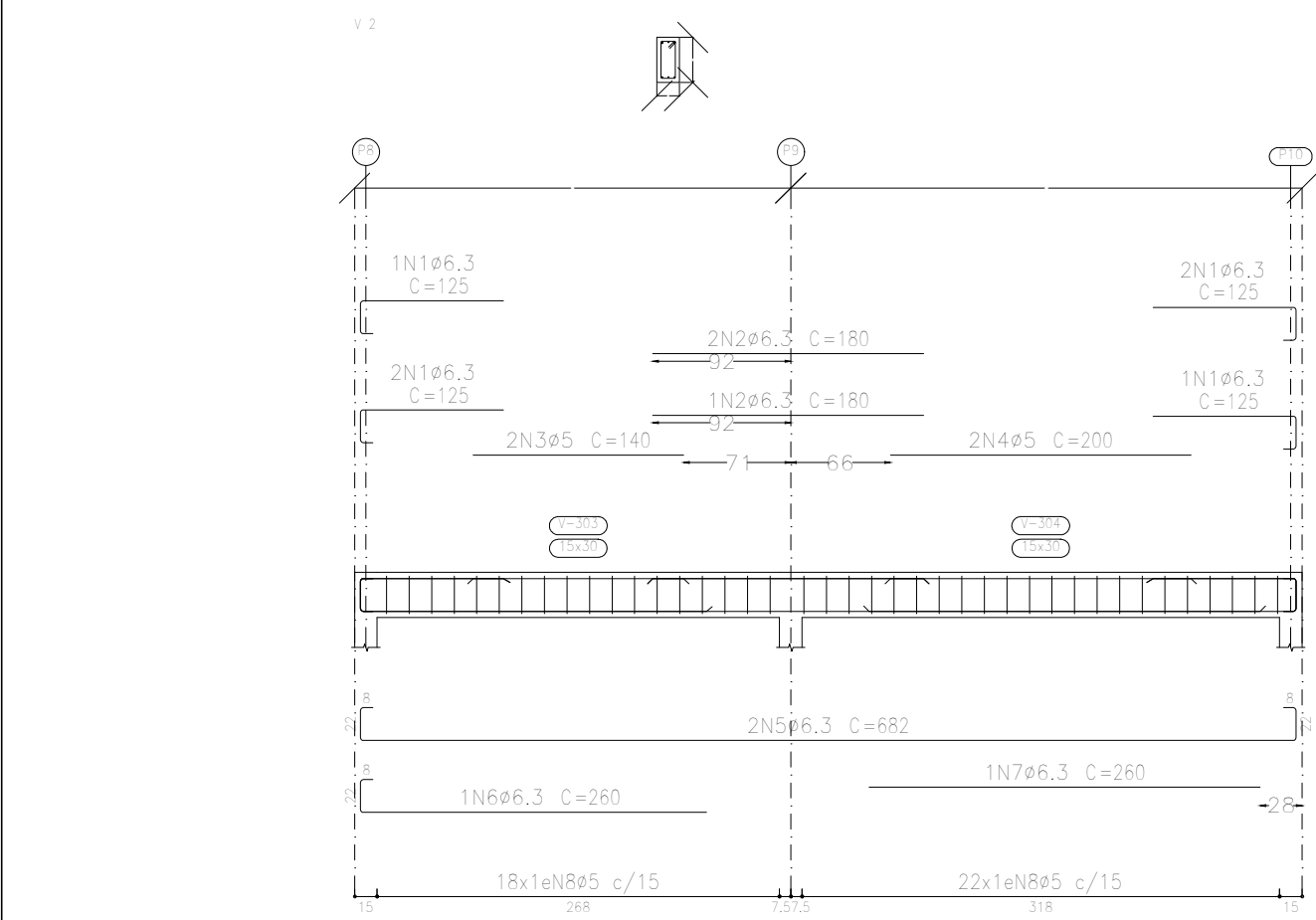
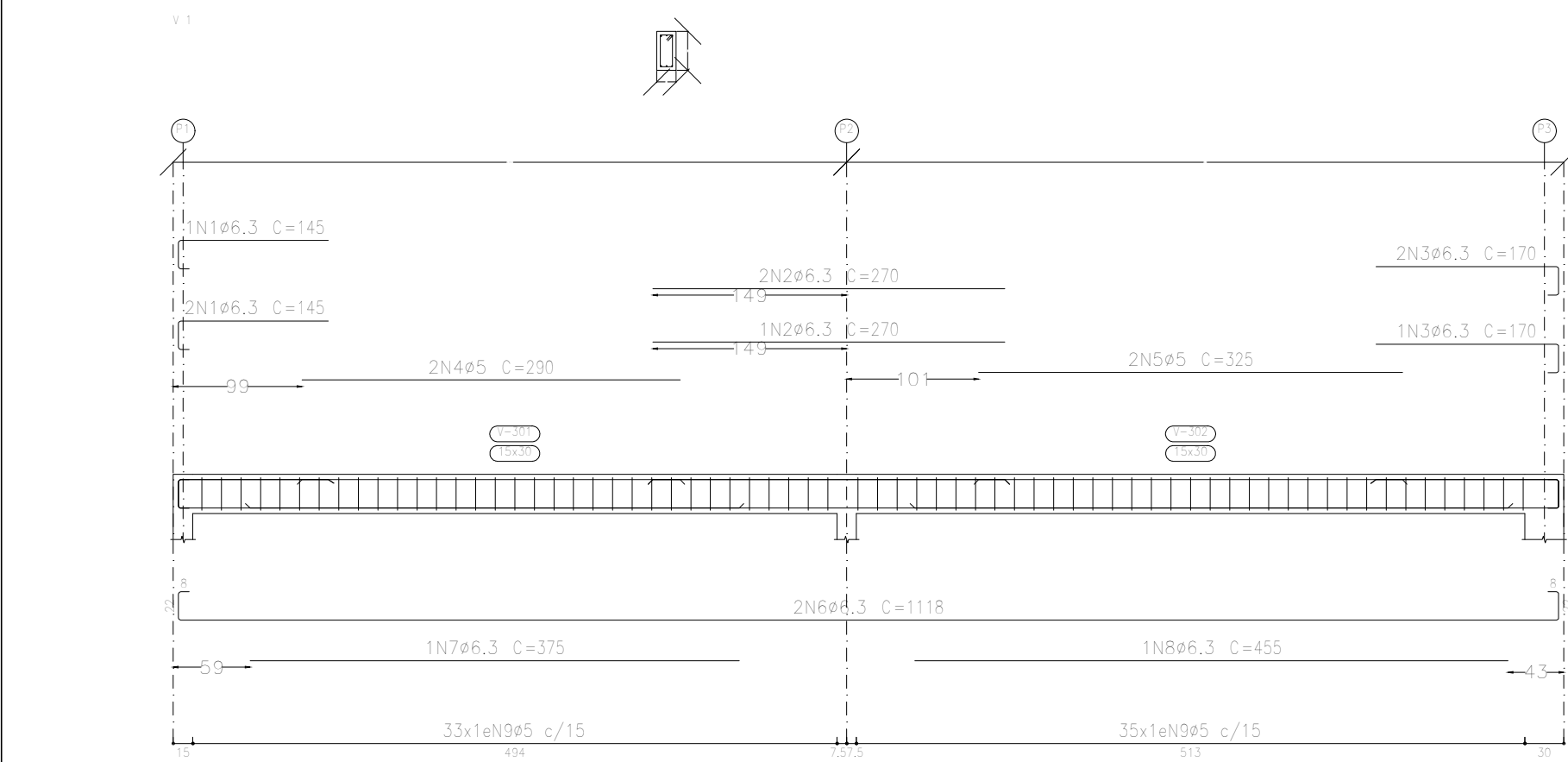
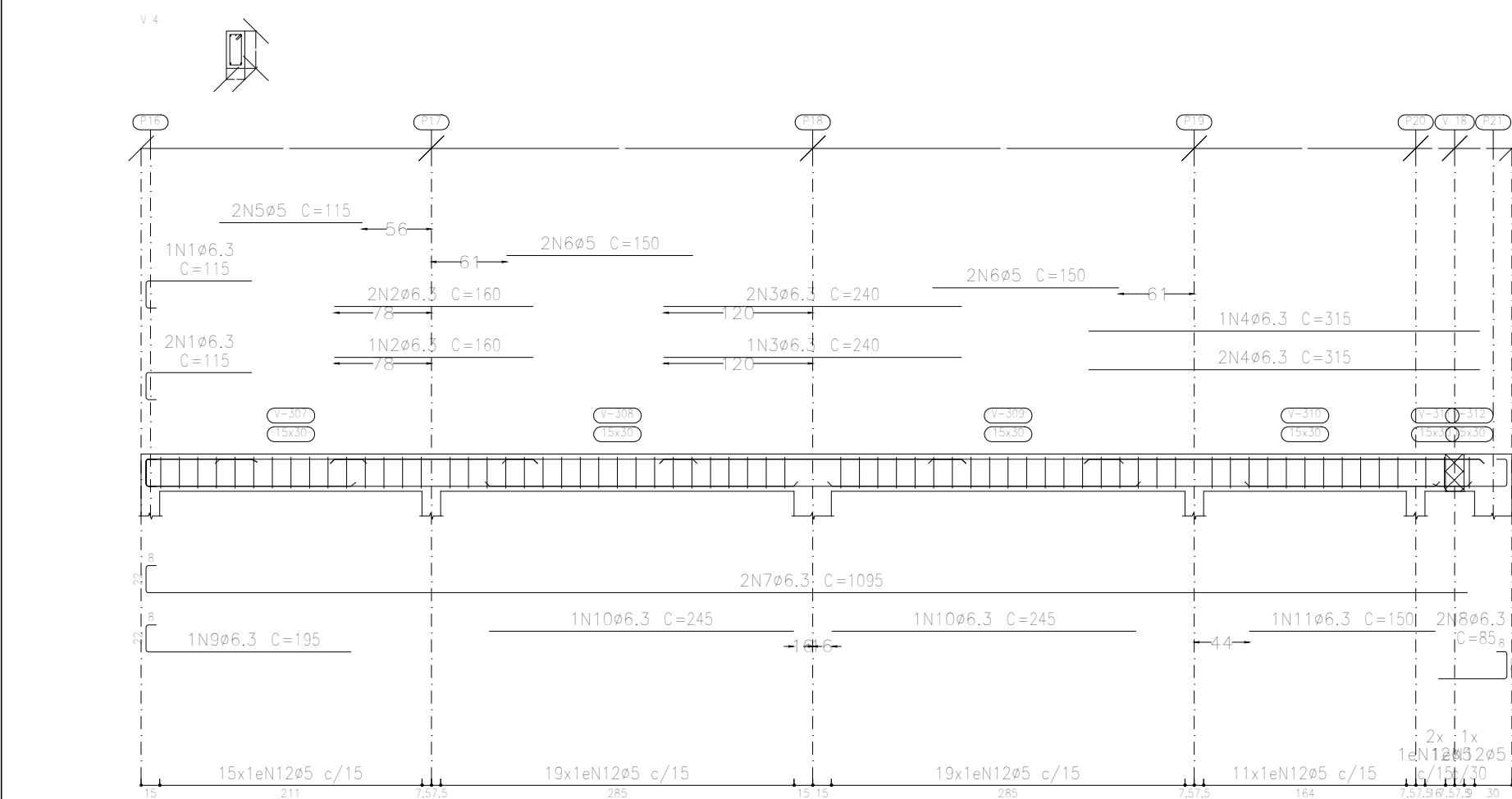


Elemento	Pos.	Diam.	Q.	Esquema (cm)	Comp. (cm)	Total (cm)	CA-50 (kg)	CA-60 (kg)
V 9	1	ø6.3	1		310	310	0.8	
	2	ø6.3	1		120	120	0.3	
	3	ø6.3	2		457	914	2.2	
	4	ø8	2		461	922	3.6	
	5	ø5	24		78	1872		2.9
					Total+10%:		7.6	3.2
V 6	1	ø6.3	1		135	135	0.3	
	2	ø6.3	1		120	120	0.3	
	3	ø6.3	2		282	564	1.4	
	4	ø8	2		286	572	2.3	
	5	ø5	13		78	1014		1.6
					Total+10%:		4.7	1.6
V 7	1	ø5	2		222	444		0.7
	2	ø6.3	2		282	564	1.4	
	3	ø6.3	1		200	200	0.5	
	4	ø5	14		78	1092		1.7
					Total+10%:		2.1	2.6

Elemento	Pos.	Diam.	Q.	Esquema (cm)	Comp. (cm)	Total (cm)	CA-50 (kg)	CA-60 (kg)
V 10	1	ø6.3	3		130	390	1.0	
	2	ø6.3	9		200	1800	4.4	
	3	ø6.3	9		195	1755	4.3	
	4	ø6.3	3		105	315	0.8	
	5	ø5	2		275	550		0.9
	6	ø5	2		295	590		0.9
	7	ø5	2		270	540		0.8
	8	ø5	2		210	420		0.7
	9	ø5	2		190	380		0.6
	10	ø5	2		145	290		0.5
	11	ø5	2		160	320		0.5
	12	ø6.3	2		924	1848	4.5	
	13	ø6.3	2		811	1622	4.0	
	14	ø6.3	2		968	1936	4.7	
	15	ø6.3	1		305	305	0.7	
	16	ø6.3	1		340	340	0.8	
	17	ø6.3	1		300	300	0.7	
	18	ø6.3	1		240	240	0.6	
	19	ø6.3	1		220	220	0.5	
	20	ø6.3	1		185	185	0.5	
	21	ø6.3	1		165	165	0.4	
	22	ø5	163		78	12714		20.0
					Total+10%:		30.7	27.4

Pê Direito
Desenho de vigas
Concreto: C25, em geral
Aço das barras: CA-50 e CA-60
Escala vigas 1:50
Escala seções 1:50
Escala aberturas 1:50



V 4	1	ø6.3	3		115	345	0.8	
	2	ø6.3	3		160	480	1.2	
	3	ø6.3	3		240	720	1.8	
	4	ø6.3	3		315	945	2.3	
	5	ø5	2		115	230		0.4
	6	ø5	4		150	600		0.9
	7	ø6.3	2		1095	2190	5.4	
	8	ø6.3	2		85	170	0.4	
	9	ø6.3	1		195	195	0.5	
	10	ø6.3	2		245	490	1.2	
	11	ø6.3	1		150	150	0.4	
	12	ø5	67		78	5226		8.2
					Total+10%:		15.4	10.5

V 1	1	ø6.3	3		145	435	1.1	
	2	ø6.3	3		270	810	2.0	
	3	ø6.3	3		170	510	1.2	
	4	ø5	2		290	580		0.9
	5	ø5	2		325	650		1.0
	6	ø6.3	2		1118	2236	5.5	
	7	ø6.3	1		375	375	0.9	
	8	ø6.3	1		455	455	1.1	
	9	ø5	66		78	5304		8.3
					Total+10%:		13.0	11.2

V 5	1	ø6.3	3		175	525	1.3	
	2	ø6.3	3		315	945	2.3	
	3	ø6.3	3		125	375	0.9	
	4	ø5	2		370	740		1.2
	5	ø5	2		195	390		0.6
	6	ø6.3	2		1087	2174	5.3	
	7	ø6.3	1		515	515	1.3	
	8	ø6.3	1		310	310	0.8	
	9	ø5	66		78	5148		8.1
					Total+10%:		13.1	10.9

V 2	1	ø6.3	6		125	750	1.8	
	2	ø6.3	3		180	540	1.3	
	3	ø5	2		140	280		0.4
	4	ø5	2		200	400		0.6
	5	ø6.3	2		682	1364	3.3	
	6	ø6.3	1		260	260	0.6	
	7	ø6.3	1		260	260	0.6	
	8	ø5	40		78	3120		4.9
					Total+10%:		8.4	6.5

V 11	1	ø6.3	3		145	435	1.1	
	2	ø6.3	3		195	585	1.4	
	3	ø6.3	3		115	345	0.8	
	4	ø5	2		210	420		0.7
	5	ø5	2		200	400		0.6
	6	ø6.3	2		772	1544	3.8	
	7	ø6.3	1		275	275	0.7	
	8	ø6.3	1		210	210	0.5	
	9	ø5	43		78	3354		5.3
					Total+10%:		9.1	7.3

V 8	1	ø6.3	3		145	435	1.1	
	2	ø6.3	3		170	510	1.2	
	3	ø5	2		360	720		1.1
	4	ø6.3	2		697	1394	3.4	
	5	ø6.3	1		505	505	1.2	
	6	ø5	40		78	3120		4.9
					Total+10%:		8.0	6.6

V 3	1	ø6.3	6		115	690	1.7	
	2	ø6.3	3		240	720	1.8	
	3	ø5	4		150	600		0.9
	4	ø8	2		686	1372	5.4	
	5	ø5	36		78	2964		4.7
					Total+10%:		9.8	6.2

Centro de Eventos – CRAS		Data:	24/11/2023
Local: CENTRO DE EVENTOS – CRAS		Número de desenho:	
Promotor:			
PROJETO ESTRUTURAL		Escala:	INDICADAS
EDUARDO RAMPANELLI TOSETTO		Data:	24/11/2023
Número do CREA: 1220503037			